

Sent via email

[REDACTED]

**Information Governance**

Christopher Ward, West Pavilion  
St Charles Centre for Health & Wellbeing  
Exmoor Street  
London  
W10 6DZ

[www.clch.nhs.uk](http://www.clch.nhs.uk)

[foi.request@clch.nhs.uk](mailto:foi.request@clch.nhs.uk)

Our ref: FOI/2016/028

29<sup>th</sup> March 2016

Dear [REDACTED]

**Freedom of Information Act 2000 request:** *Organisational structure, Agency spend & Projects*

With reference to your request for information, dated 29<sup>th</sup> February, made under section 1(1) of the Freedom of Information Act, I am writing to inform you of the outcome of your information request.

You asked the following:

**1. Organisational chart inc. contact names (operational level)**

Please refer to the attached spreadsheet.

**2. Contractor/agency staff (non-clinical, non-medical) headcount**

The current contractor/agency staff headcount is 99.

**3. Contractor/agency staff (non-clinical, non-medical) recruitment spend 2015 – 2016**

The Trust does not have a specific budget for the recruitment cost associated with temporary staff.

**4. Contractor/agency staff (non-clinical, non-medical) recruitment budget 2016 - 2017**

The Trust does not have a specific budget for the recruitment cost associated with temporary staff.

**5. Contractor/agency staff price caps; rates to be applied at Central London Community Healthcare NHS Trust - Maximum rate per hour / per day (excluding VAT)**

The Trust works to the price caps set by Monitor and widely distributed - please refer to the attached document.

**6. Complete list of projects / programmes managed by Central London Community Healthcare NHS Trust**

Please refer to the attached document for a complete list of projects/ programmes managed by CLCH NHS Trust.

This completes our response to your request for information. If you are unhappy with our response, please write to us giving your reasons and we will address them. If you remain dissatisfied you are entitled to appeal to the Information Commissioner:

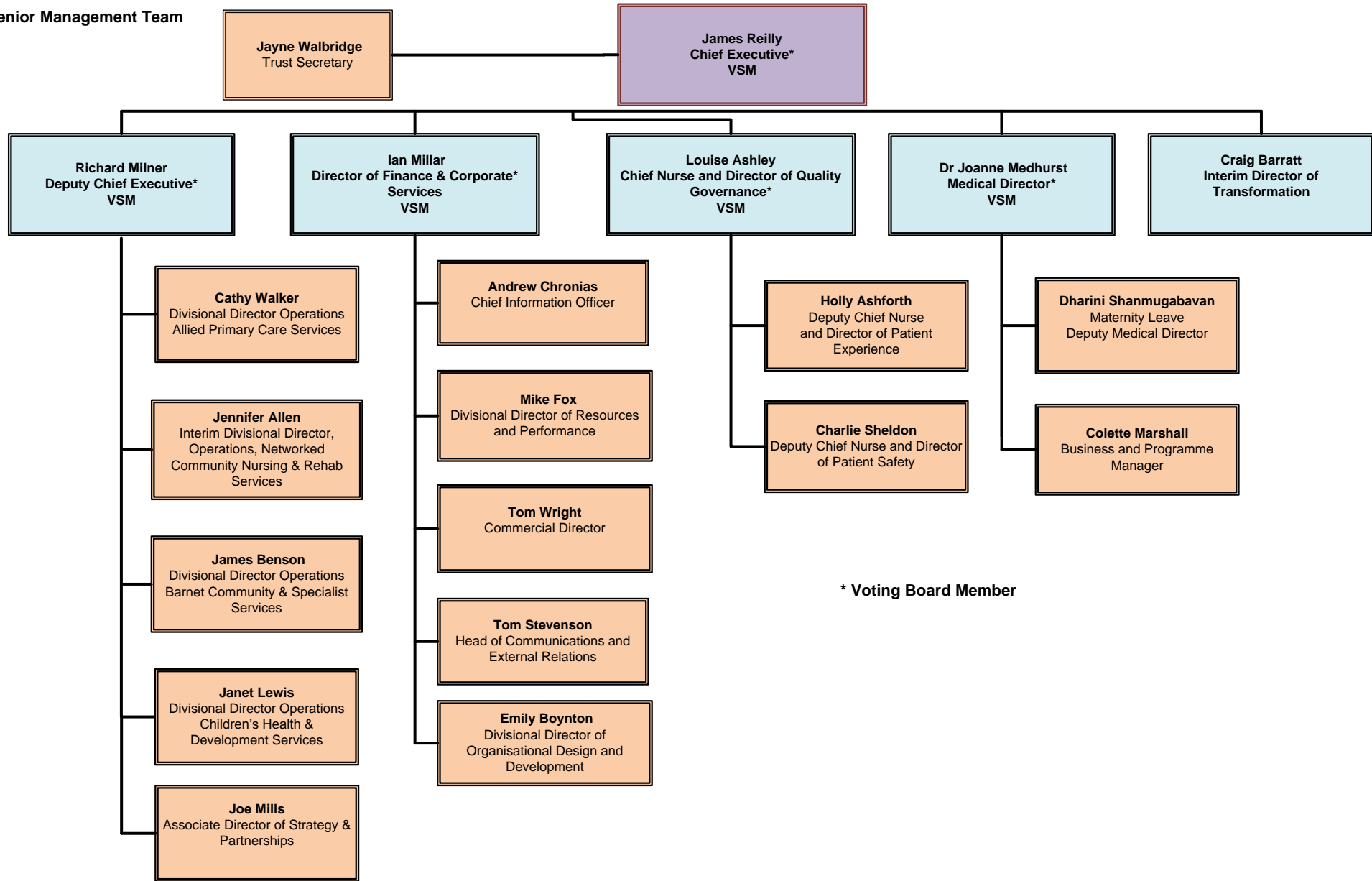
Customer Contact  
Information Commissioner's Office  
Wycliffe House  
Water Lane  
Wilmslow SK9 5AF  
Tel: 0303 123 1113  
[http://ico.org.uk/concerns/getting/report\\_concern\\_foi](http://ico.org.uk/concerns/getting/report_concern_foi)

Yours sincerely,

**Cyndee Massa**  
**Information Governance Facilitator**  
**Central London Community Healthcare NHS Trust**

## CLCH Projects

Element	Workstream	PID Title
Local savings	BCSS	Accurate Resourcing to Assure Contractual Delivery
Local savings	Medical	Additional Income (MOPs)
Local savings	DQ&L	Administrative Review
Transformation	Workforce	Allocate
Transformation	Workforce	Bank and Agency Usage
Local savings	Procurement	Better purchasing & contract values
Transformation	Estates/Footprint	Business rates reductions
Local savings	APCS	CBU Manager Restructure
Local savings	Medical	Closure of the Library (Band 4, 6 and 7)
Local savings	Comms	Communications Room hire Savings
Local savings	NCNR	CIS Budget Review
Local savings	NCNR	Community Learning Disability
Transformation	Corporate transformation	Corporate Services Strategic Partnership
Local savings	HR	Deletion of HR Admin Post
Local savings	CHD	Division Management Structure
Transformation	Workforce	Divisional Structure and Support
Transformation	Estates/Footprint	Estates Rationalisation
Transformation	Estates/Footprint	Estates Transformation- Property Vacation
Transformation	Estates/Footprint	FD C Meeting/Training room utilisation
Transformation	Estates/Footprint	Footprint Project D - New Ways of Working
Local savings	APCS	Homeless Health Victoria Street Medical Centre Review
Local savings	IMT	IMT Management Restructure
Transformation	Estates/Footprint	Income recovery
Local savings	CHD	Integrated Children Complex Needs
Transformation	Workforce	Interim Usage
Local savings	CHD	LAC Nursing
Local savings	BCSS	Maximising over performance of services through staff deployment or cost recovery
Local savings	NCNR	Medical & Surgery Procurement Review
Transformation	Mobile	Mobile Working Project
Transformation	Estates/Footprint	Negotiated reduction in CHP charges in relation to Vale Drive and Parkview
Transformation	Estates/Footprint	Negotiated rent reduction in relation to Rehab beds in PLK and Athlone
Local savings	APCS	Offender Health Seacole Centre and HIMP Team Lead - Consolidation of Posts
Local savings	Ops Management	Operations Management Savings
Transformation	Estates/Footprint	Over delivery in relation to Estates 14/15 local CIPs
Transformation	Estates/Footprint	Part year effect of in year vacations of specific sites
Transformation	Estates/Footprint	Partial vacation of VS within year
Local savings	CEO	Pay Savings 2015/16
Local savings	APCS	PCMH - Saving from Uplift to IAPT Budget
Local savings	NCNR	Procurement Leg Ulcer Socks
Local savings	BCSS	Productivity within Cost and Volume Services
Local savings	BCSS	Productivity within Cost and Volume Services (West Herts)
Local savings	BCSS	Purchasing Management 2%
Transformation	Estates/Footprint	Reduction in NHS PS management charges
Local savings	APCS	Reduction of Admin Post Band 4
Local savings	APCS	Reduction of Sexual Health Posts
Transformation	Estates/Footprint	Relocation of Sexual Health Service from St Charles to Woodfield Rd
Local savings	Medical	Removal from Non-Pay Budget Allocation.
Local savings	CHD	Review of Health Visitor Skill Mix Band 7
Local savings	NCNR	Review of West London Senior Nurse Structure
Local savings	HR	Savings from Payroll Team in House
Local savings	APCS	Skill Mix in Dental Service
Local savings	CHD	SLT Children Therapies
Local savings	Finance	Strategic Procurement Re-Design
Transformation	Workforce	Travel Scheme
Local savings	NCNR	Treatment Room Support
Local savings	SBD	Various Commercial Cluster Programmes
Local savings	IMT	VOIP
Local savings	APCS	WiC Admin Restructure
Local savings	APCS	WiC Tariff Review



# **Price caps for agency staff: reference tables**

**23 November 2015**

## Price caps reference tables

The following tables set the price caps for each staff group. The price caps are the maximum total hourly rate that trusts may pay for an agency worker, including worker pay and all other elements of the payment. They exclude VAT. These are maximum rates – trusts are expected to continue to secure lower rates for most transactions. They are based on 2015/16 pay scales and would be revised in light of any contract changes from 1 April 2016.

The tables are as follows:

- Table 1. Medical and dental staff: all areas
- Table 2. All other clinical staff: no high cost area supplement
- Table 3. All other clinical staff: Fringe high cost area supplement
- Table 4. All other clinical staff: Outer London high cost area supplement
- Table 5. All other clinical staff: Inner London high cost area supplement
- Table 6. Non-clinical staff: no high cost area supplement
- Table 7. Non-clinical staff: Fringe high cost area supplement
- Table 8. Non-clinical staff: Outer London high cost area supplement
- Table 9. Non-clinical staff: Inner London high cost area supplement

Where a shift covers time periods that are capped at different rates, the cap should be calculated pro rata for those time periods. For example, a shift for a band 5 clinical worker on 23 November 2015 with no high cost area supplement over six day hours and two night hours has a capped rate of £247.68 (= £28.80 x 6 hours + £37.44 x 2 hours)

**Table 1. Medical and dental staff: all areas**

Grade and shift type		Max charge from 23 Nov 2015	Max charge from 1 Feb 2016	Max charge from 1 Apr 2016
Foundation year 1	Core	£32.54	£26.03	£20.17
	Unsocial	£39.31	£31.45	£24.38
Foundation year 2	Core	£40.36	£32.28	£25.02
	Unsocial	£48.76	£39.01	£30.23
Registrar (SP1-2)/ Core Medical Training	Core	£45.76	£36.61	£28.37
	Unsocial	£55.30	£44.24	£34.28
Registrar (SP3+)	Core	£57.05	£45.64	£35.37
	Unsocial	£68.94	£55.15	£42.74
Dental core training	Core	£56.15	£44.92	£34.81
	Unsocial	£67.84	£54.28	£42.06
Specialty Doctor/ Staff Grade	Core	£66.43	£58.13	£51.48
	Unsocial	£88.57	£77.50	£68.64
Associate Specialist	Core	£82.21	£71.94	£63.72
	Unsocial	£109.62	£95.92	£84.96
Consultant	Core	£97.22	£85.06	£75.34
	Unsocial	£129.62	£113.42	£100.46

Core hours are defined for the purpose of price caps as 7am to 7pm, Monday to Friday (excluding Bank Holidays). Unsocial hours are defined for the purpose of price caps as any other time, and including Bank Holidays. On-call hours should be treated the same as either core or unsocial hours, according to when they fall. All prices exclude VAT.

**Table 2. All other clinical staff: no high cost area supplement**

Grade and shift type		Max charge from 23 Nov 2015	Max charge from 1 Feb 2016	Max charge from 1 Apr 2016
Band 1	Day	£15.70	£13.74	£12.17
	Night/Saturday	£23.55	£20.61	£18.25
	Sunday/Bank Holiday	£31.41	£27.48	£24.34
Band 2	Day	£18.19	£15.92	£14.10
	Night/Saturday	£26.20	£22.92	£20.30
	Sunday/Bank Holiday	£34.20	£29.93	£26.51
Band 3	Day	£19.89	£17.41	£15.42
	Night/Saturday	£27.25	£23.85	£21.12
	Sunday/Bank Holiday	£34.61	£30.29	£26.82
Band 4	Day	£22.73	£19.89	£17.61
	Night/Saturday	£29.55	£25.85	£22.90
	Sunday/Bank Holiday	£36.36	£31.82	£28.18
Band 5	Day	£28.80	£25.20	£22.32
	Night/Saturday	£37.44	£32.76	£29.02
	Sunday/Bank Holiday	£46.09	£40.33	£35.72
Band 6	Day	£35.65	£31.19	£27.63
	Night/Saturday	£46.34	£40.55	£35.92
	Sunday/Bank Holiday	£57.04	£49.91	£44.20
Band 7	Day	£41.87	£36.64	£32.45
	Night/Saturday	£54.43	£47.63	£42.18
	Sunday/Bank Holiday	£66.99	£58.62	£51.92
Band 8a	Day	£48.61	£42.54	£37.67
	Night/Saturday	£63.19	£55.30	£48.98
	Sunday/Bank Holiday	£77.78	£68.06	£60.28
Band 8b	Day	£58.33	£51.04	£45.21
	Night/Saturday	£75.83	£66.35	£58.77
	Sunday/Bank Holiday	£93.33	£81.66	£72.33
Band 8c	Day	£69.31	£60.64	£53.71
	Night/Saturday	£90.10	£78.84	£69.83
	Sunday/Bank Holiday	£110.89	£97.03	£85.94
Band 8d	Day	£83.42	£73.00	£64.65
	Night/Saturday	£108.45	£94.90	£84.05
	Sunday/Bank Holiday	£133.48	£116.79	£103.45
Band 9	Day	£100.63	£88.05	£77.99
	Night/Saturday	£130.82	£114.47	£101.39
	Sunday/Bank Holiday	£161.01	£140.88	£124.78

All prices exclude VAT. High cost area supplements and shift times are defined as per Agenda for Change.



**Table 3. All other clinical staff: Fringe high cost area supplement**

Grade and shift type		Max charge from 23 Nov 2015	Max charge from 1 Feb 2016	Max charge from 1 Apr 2016
Band 1	Day	£16.49	£14.43	£12.78
	Night/Saturday	£24.73	£21.64	£19.17
	Sunday/Bank Holiday	£32.98	£28.85	£25.56
Band 2	Day	£19.10	£16.72	£14.81
	Night/Saturday	£27.51	£24.07	£21.32
	Sunday/Bank Holiday	£35.91	£31.43	£27.83
Band 3	Day	£20.89	£18.28	£16.19
	Night/Saturday	£28.61	£25.04	£22.18
	Sunday/Bank Holiday	£36.34	£31.80	£28.17
Band 4	Day	£23.86	£20.88	£18.49
	Night/Saturday	£31.02	£27.15	£24.04
	Sunday/Bank Holiday	£38.18	£33.41	£29.59
Band 5	Day	£30.24	£26.46	£23.44
	Night/Saturday	£39.32	£34.40	£30.47
	Sunday/Bank Holiday	£48.39	£42.34	£37.50
Band 6	Day	£37.43	£32.75	£29.01
	Night/Saturday	£48.66	£42.58	£37.71
	Sunday/Bank Holiday	£59.89	£52.40	£46.41
Band 7	Day	£43.96	£38.47	£34.07
	Night/Saturday	£57.15	£50.01	£44.29
	Sunday/Bank Holiday	£70.34	£61.55	£54.52
Band 8a	Day	£51.04	£44.66	£39.56
	Night/Saturday	£66.35	£58.06	£51.42
	Sunday/Bank Holiday	£81.67	£71.46	£63.29
Band 8b	Day	£61.25	£53.59	£47.47
	Night/Saturday	£79.62	£69.67	£61.71
	Sunday/Bank Holiday	£98.00	£85.75	£75.95
Band 8c	Day	£72.77	£63.67	£56.40
	Night/Saturday	£94.60	£82.78	£73.32
	Sunday/Bank Holiday	£116.43	£101.88	£90.24
Band 8d	Day	£87.60	£76.65	£67.89
	Night/Saturday	£113.87	£99.64	£88.25
	Sunday/Bank Holiday	£140.15	£122.63	£108.62
Band 9	Day	£105.66	£92.46	£81.89
	Night/Saturday	£137.36	£120.19	£106.46
	Sunday/Bank Holiday	£169.06	£147.93	£131.02

All prices exclude VAT. High cost area supplements and shift times are defined as per Agenda for Change.

**Table 4. All other clinical staff: Outer London high cost area supplement**

Grade and shift type		Max charge from 23 Nov 2015	Max charge from 1 Feb 2016	Max charge from 1 Apr 2016
Band 1	Day	£18.06	£15.80	£14.00
	Night/Saturday	£27.09	£23.70	£20.99
	Sunday/Bank Holiday	£36.12	£31.60	£27.99
Band 2	Day	£20.92	£18.31	£16.22
	Night/Saturday	£30.13	£26.36	£23.35
	Sunday/Bank Holiday	£39.34	£34.42	£30.48
Band 3	Day	£22.88	£20.02	£17.73
	Night/Saturday	£31.34	£27.42	£24.29
	Sunday/Bank Holiday	£39.80	£34.83	£30.85
Band 4	Day	£26.14	£22.87	£20.26
	Night/Saturday	£33.98	£29.73	£26.33
	Sunday/Bank Holiday	£41.82	£36.59	£32.41
Band 5	Day	£33.12	£28.98	£25.67
	Night/Saturday	£43.06	£37.68	£33.37
	Sunday/Bank Holiday	£53.00	£46.37	£41.07
Band 6	Day	£41.00	£35.87	£31.77
	Night/Saturday	£53.29	£46.63	£41.30
	Sunday/Bank Holiday	£65.59	£57.39	£50.83
Band 7	Day	£48.15	£42.13	£37.32
	Night/Saturday	£62.60	£54.77	£48.51
	Sunday/Bank Holiday	£77.04	£67.41	£59.71
Band 8a	Day	£55.90	£48.92	£43.33
	Night/Saturday	£72.67	£63.59	£56.32
	Sunday/Bank Holiday	£89.45	£78.26	£69.32
Band 8b	Day	£67.08	£58.70	£51.99
	Night/Saturday	£87.21	£76.31	£67.58
	Sunday/Bank Holiday	£107.33	£93.91	£83.18
Band 8c	Day	£79.70	£69.74	£61.77
	Night/Saturday	£103.61	£90.66	£80.30
	Sunday/Bank Holiday	£127.52	£111.58	£98.83
Band 8d	Day	£95.94	£83.95	£74.35
	Night/Saturday	£124.72	£109.13	£96.66
	Sunday/Bank Holiday	£153.50	£134.31	£118.96
Band 9	Day	£115.73	£101.26	£89.69
	Night/Saturday	£150.44	£131.64	£116.59
	Sunday/Bank Holiday	£185.16	£162.02	£143.50

All prices exclude VAT. High cost area supplements and shift times are defined as per Agenda for Change.

**Table 5. All other clinical staff: Inner London high cost area supplement**

Grade and shift type		Max charge from 23 Nov 2015	Max charge from 1 Feb 2016	Max charge from 1 Apr 2016
Band 1	Day	£18.84	£16.49	£14.60
	Night/Saturday	£28.27	£24.73	£21.91
	Sunday/Bank Holiday	£37.69	£32.98	£29.21
Band 2	Day	£21.83	£19.10	£16.92
	Night/Saturday	£31.44	£27.51	£24.37
	Sunday/Bank Holiday	£41.05	£35.91	£31.81
Band 3	Day	£23.87	£20.89	£18.50
	Night/Saturday	£32.70	£28.61	£25.34
	Sunday/Bank Holiday	£41.53	£36.34	£32.19
Band 4	Day	£27.27	£23.86	£21.14
	Night/Saturday	£35.46	£31.02	£27.48
	Sunday/Bank Holiday	£43.64	£38.18	£33.82
Band 5	Day	£34.56	£30.24	£26.79
	Night/Saturday	£44.93	£39.32	£34.82
	Sunday/Bank Holiday	£55.30	£48.39	£42.86
Band 6	Day	£42.78	£37.43	£33.15
	Night/Saturday	£55.61	£48.66	£43.10
	Sunday/Bank Holiday	£68.44	£59.89	£53.04
Band 7	Day	£50.24	£43.96	£38.94
	Night/Saturday	£65.32	£57.15	£50.62
	Sunday/Bank Holiday	£80.39	£70.34	£62.30
Band 8a	Day	£58.33	£51.04	£45.21
	Night/Saturday	£75.83	£66.35	£58.77
	Sunday/Bank Holiday	£93.33	£81.67	£72.33
Band 8b	Day	£70.00	£61.25	£54.25
	Night/Saturday	£91.00	£79.62	£70.52
	Sunday/Bank Holiday	£112.00	£98.00	£86.80
Band 8c	Day	£83.17	£72.77	£64.45
	Night/Saturday	£108.12	£94.60	£83.79
	Sunday/Bank Holiday	£133.07	£116.43	£103.13
Band 8d	Day	£100.11	£87.60	£77.58
	Night/Saturday	£130.14	£113.87	£100.86
	Sunday/Bank Holiday	£160.17	£140.15	£124.14
Band 9	Day	£120.76	£105.66	£93.59
	Night/Saturday	£156.99	£137.36	£121.66
	Sunday/Bank Holiday	£193.21	£169.06	£149.74

All prices exclude VAT. High cost area supplements and shift times are defined as per Agenda for Change.

**Table 6. Non-clinical staff: no high cost area supplement**

Grade and shift type		Max charge from 23 Nov 2015
Band 1	Day	£12.17
	Night/Saturday	£18.25
	Sunday/Bank Holiday	£24.34
Band 2	Day	£14.10
	Night /Saturday	£20.30
	Sunday/Bank Holiday	£26.51
Band 3	Day	£15.42
	Night/Saturday	£21.12
	Sunday/Bank Holiday	£26.82
Band 4	Day	£17.61
	Night/Saturday	£22.90
	Sunday/Bank Holiday	£28.18
Band 5	Day	£22.32
	Night/Saturday	£29.02
	Sunday/Bank Holiday	£35.72
Band 6	Day	£27.63
	Night/Saturday	£35.92
	Sunday/Bank Holiday	£44.20
Band 7	Day	£32.45
	Night/Saturday	£42.18
	Sunday/Bank Holiday	£51.92
Band 8a	Day	£37.67
	Night/Saturday	£48.98
	Sunday/Bank Holiday	£60.28
Band 8b	Day	£45.21
	Night/Saturday	£58.77
	Sunday/Bank Holiday	£72.33
Band 8c	Day	£53.71
	Night/Saturday	£69.83
	Sunday/Bank Holiday	£85.94
Band 8d	Day	£64.65
	Night/Saturday	£84.05
	Sunday/Bank Holiday	£103.45
Band 9	Day	£77.99
	Night/Saturday	£101.39
	Sunday/Bank Holiday	£124.78

All prices exclude VAT. High cost area supplements and shift times are defined as per Agenda for Change.

**Table 7. Non-clinical staff: Fringe high cost area supplement**

Grade and shift type		Max charge from 23 Nov 2015
Band 1	Day	£12.78
	Night/Saturday	£19.17
	Sunday/Bank Holiday	£25.56
Band 2	Day	£14.81
	Night/Saturday	£21.32
	Sunday/Bank Holiday	£27.83
Band 3	Day	£16.19
	Night/Saturday	£22.18
	Sunday/Bank Holiday	£28.17
Band 4	Day	£18.49
	Night/Saturday	£24.04
	Sunday/Bank Holiday	£29.59
Band 5	Day	£23.44
	Night/Saturday	£30.47
	Sunday/Bank Holiday	£37.50
Band 6	Day	£29.01
	Night/Saturday	£37.71
	Sunday/Bank Holiday	£46.41
Band 7	Day	£34.07
	Night/Saturday	£44.29
	Sunday/Bank Holiday	£54.52
Band 8a	Day	£39.56
	Night/Saturday	£51.42
	Sunday/Bank Holiday	£63.29
Band 8b	Day	£47.47
	Night/Saturday	£61.71
	Sunday/Bank Holiday	£75.95
Band 8c	Day	£56.40
	Night/Saturday	£73.32
	Sunday/Bank Holiday	£90.24
Band 8d	Day	£67.89
	Night/Saturday	£88.25
	Sunday/Bank Holiday	£108.62
Band 9	Day	£81.89
	Night/Saturday	£106.46
	Sunday/Bank Holiday	£131.02

All prices exclude VAT. High cost area supplements and shift times are defined as per Agenda for Change.

**Table 8. Non-clinical staff: Outer London high cost area supplement**

Grade and shift type		Max charge from 23 Nov 2015
Band 1	Day	£14.00
	Night/Saturday	£20.99
	Sunday/Bank Holiday	£27.99
Band 2	Day	£16.22
	Night/Saturday	£23.35
	Sunday/Bank Holiday	£30.48
Band 3	Day	£17.73
	Night/Saturday	£24.29
	Sunday/Bank Holiday	£30.85
Band 4	Day	£20.26
	Night/Saturday	£26.33
	Sunday/Bank Holiday	£32.41
Band 5	Day	£25.67
	Night/Saturday	£33.37
	Sunday/Bank Holiday	£41.07
Band 6	Day	£31.77
	Night/Saturday	£41.30
	Sunday/Bank Holiday	£50.83
Band 7	Day	£37.32
	Night/Saturday	£48.51
	Sunday/Bank Holiday	£59.71
Band 8a	Day	£43.33
	Night/Saturday	£56.32
	Sunday/Bank Holiday	£69.32
Band 8b	Day	£51.99
	Night/Saturday	£67.58
	Sunday/Bank Holiday	£83.18
Band 8c	Day	£61.77
	Night/Saturday	£80.30
	Sunday/Bank Holiday	£98.83
Band 8d	Day	£74.35
	Night/Saturday	£96.66
	Sunday/ Bank Holiday	£118.96
Band 9	Day	£89.69
	Night/Saturday	£116.59
	Sunday/Bank Holiday	£143.50

All prices exclude VAT. High cost area supplements and shift times are defined as per Agenda for Change.

**Table 9. Non-clinical staff: Inner London high cost area supplement**

Grade and shift type		Max charge from 23 Nov 2015
Band 1	Day	£14.60
	Night/Saturday	£21.91
	Sunday/Bank Holiday	£29.21
Band 2	Day	£16.92
	Night/Saturday	£24.37
	Sunday/Bank Holiday	£31.81
Band 3	Day	£18.50
	Night/Saturday	£25.34
	Sunday/Bank Holiday	£32.19
Band 4	Day	£21.14
	Night/Saturday	£27.48
	Sunday/Bank Holiday	£33.82
Band 5	Day	£26.79
	Night/Saturday	£34.82
	Sunday/Bank Holiday	£42.86
Band 6	Day	£33.15
	Night/Saturday	£43.10
	Sunday/Bank Holiday	£53.04
Band 7	Day	£38.94
	Night/Saturday	£50.62
	Sunday/Bank Holiday	£62.30
Band 8a	Day	£45.21
	Night/Saturday	£58.77
	Sunday/Bank Holiday	£72.33
Band 8b	Day	£54.25
	Night/Saturday	£70.52
	Sunday/Bank Holiday	£86.80
Band 8c	Day	£64.45
	Night/Saturday	£83.79
	Sunday/Bank Holiday	£103.13
Band 8d	Day	£77.58
	Night/Saturday	£100.86
	Sunday/Bank Holiday	£124.14
Band 9	Day	£93.59
	Night/Saturday	£121.66
	Sunday/Bank Holiday	£149.74

All prices exclude VAT. High cost area supplements and shift times are defined as per Agenda for Change.